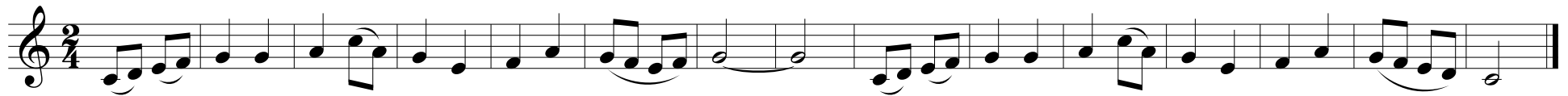


# Easter Alleluia

Michael Keppel



Al - le - lu - ia! Al - le - lu - ia! Al - le - lu - ia! ——— Al - le - lu - ia! Al - le - lu - ia! Al - le - lu - ia!



Christ is — ris - en Cre - at - or of all; He has shown pi - ty on all peo - ple.

The English translation of the Gospel Verse from Lectionary for Mass © 1969, 1981, 1997. International Committee on English in the Liturgy, Inc. All rights reserved.  
 Music © 2008 Michael Keppel. Licensed under a Creative Commons Attributed-NonCommercial-No Derivs License (<http://creativecommons.org/licenses/by-nc-nd/3.0>)